



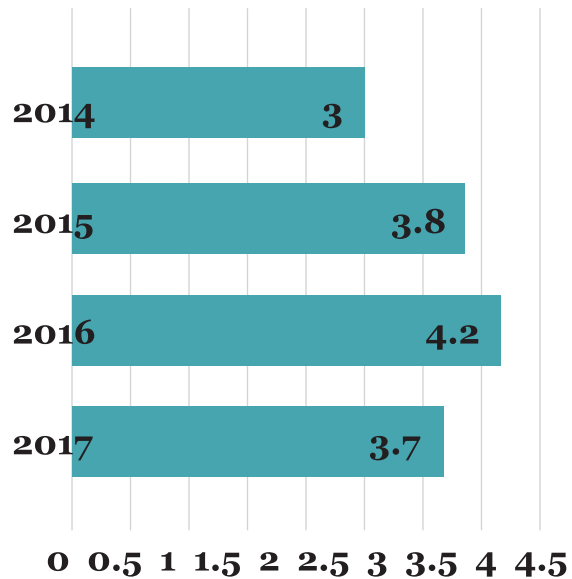
# COMPANY PROFILE

# 6 LEADING CAUSES FOR MAKING INVESTMENTS IN ROMANIA



- Entry to the market in Europe and a European Union Member.
- Nearness to the Black Sea area which is enlarged; an economic region with more than 100 million consumers.
- Huge interior market (20 million residents) and different interior economy.
- Continuous interior energy resources: In terms of energy, Romania is extremely independent, which is exceptional in South East Europe.
- Human resources that are affordable, flexible and skilled with reduced expenses in comparison to states nearby.
- Growth of groups in numerous industries such as IT and automotive currently recognized on European level.

# ROMANIA IN FIGURES



- 1ST ECONOMIC GROWTH IN EMERGING EUROPE (2018/19)
- 2ND IN FDI ATTRACTION IN EMERGING EUROPE (2015)
- 70 INDUSTRIAL PARKS

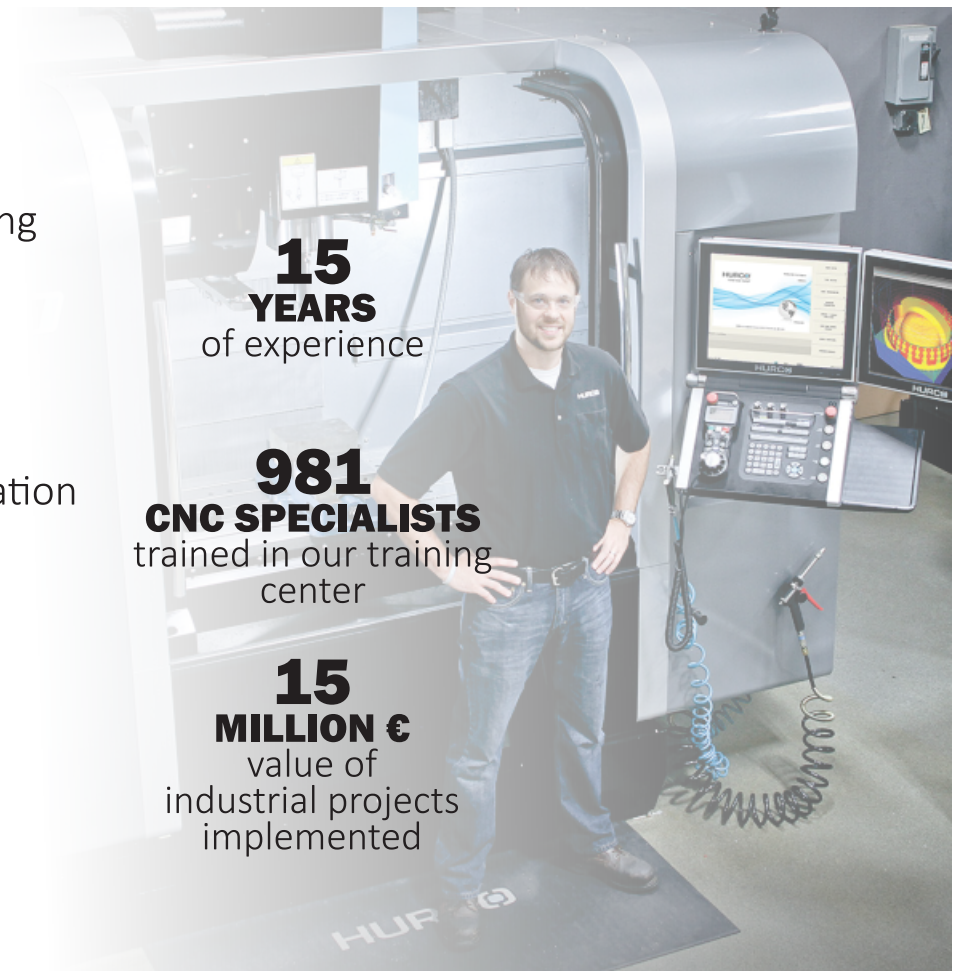
Bericht: Rumänien könnte höchste Wachstumsrate in MOE erreicht  
Erste Group: MOE-Länder in einem anderen Wirtschaftszyklus als die BRIC-Staaten  
Freitag, 25. März 2016

Growth %

# WHO WE ARE



- Managed by owners
- **15 years of experience** in performing and implementing the investments projects in the industrial field
- **439** successfully installed **CNC machines**
- **652 clients** with which we have a continuous collaboration
- **58 CAD CAM software projects** implemented
- **981 CNC specialists trained** in our training center
- **15 million € value of industrial projects** implemented





# WHAT WE PROVIDE

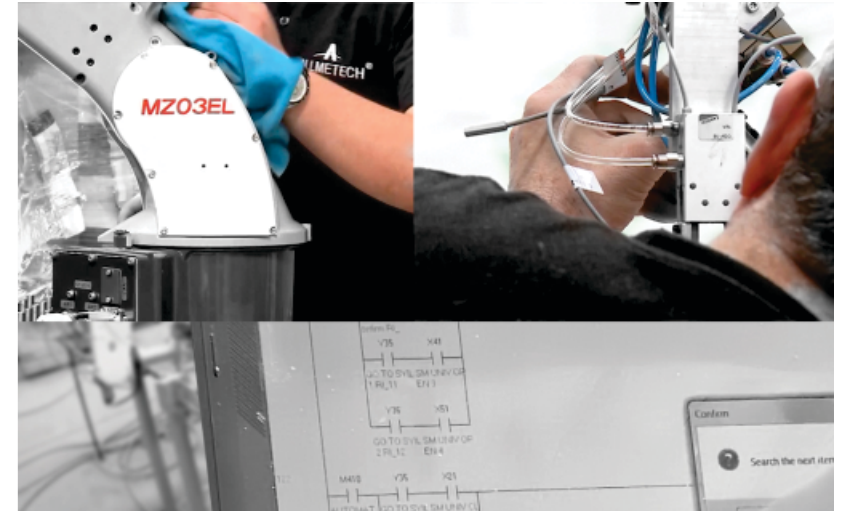
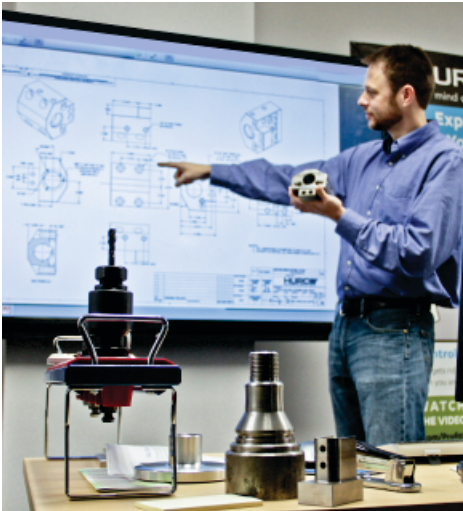


- Manufacture of prototype specimen and metal processing for series production in the field of: Automotive, Aerospace & Defence, Food & Beverage, Engineering, Medical, Naval Industry.
- CNC Milling in 3- 5 axes, Boring, Drilling, Sawing, Shearing, Belt Grinding
- Machining materials: Steel, Aluminium, Copper, Bronze, Stainless Steel
- NC programming: 2D- 3D CAD (STP, STEP, IGS, IGES, CATPART, SLDPRT, PRT (NX CAD), DXF, DWG).

- We produce Your Quality
- We deliver at Dour Dates
- We keep our Promises
- From us, you can expect more...

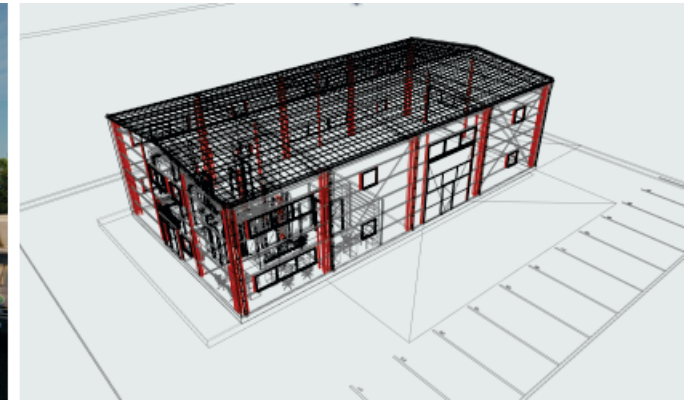
# Our Strategy

**SMARTECH**  
FERTIGUNG



- We use State of the Art Technologies when it comes to Processes and Quality Management
- We are searching for selected demanding Customers and grow with their Challenges
- We focus on the German Market, as these are the most demanding ones in entire Europe.
- We are Your long-term Partner as Supplier and Customer

# Facilities



- Located in Industrial Park Miroslava
- Very Good Infrastructure: 360 m<sup>2</sup> industrial hall
- Clear Layout and Company Structure
- Flexibility for Future Growth

## **HURCO DCX 22SK40**

### **VERTICAL MACHINING CENTER IN 3 AXIS**

Table load (kg): 5.000

Table surface (mm): 2.100 x 1.600

X/Y/Z-Axis (mm): 2.200 x 1.700 x 750

Accuracy (mm): R= 0,005; PA= 0,01

Spindle nose-to-table surface distance (mm): 950

## **HURCO VMX 30I**

### **VERTICAL MACHINING CENTER IN 3 AXIS**

Table load (kg): 1.360

Table surface (mm): 1.020 x 508

X/Y/Z-Axis (mm): 762 x 508 x 610

Accuracy (mm): R= 0,005; PA= 0,01

Spindle nose-to-table surface distance (mm): 750

## **EMCO MAXXMILL 750**

### **VERTICAL MACHINING CENTER IN 5 AXIS**

Table load (kg): 300

Table surface (mm): 750 x 600

X/Y/Z-Axis (mm): 750 x 610 x 500

Distance spindle nose – table (mm): 175 / 675

Swivel range B-axis: +/- 100°

Range of rotation C-axis (rotary table): +0 – 360°

## **STAHLWERK LYNX 400 PC**

### **HORIZONTAL MACHINING CENTER**

X/Y/Z-Axis (mm): 508 x 508 x 508

Pallet size (mm): 400 x 400

Max speed (rpm): 8000

Max rating (kW): 14,9

Rapids on X/Y/Z (m/min): 25,4/25,4/25,4



# Quality Management



- We are process driven
- We deliver the Quality you specified
- We keep our Quality Promises
- We use appropriate and calibrated Measurement Tools
- We document according your Demand

**ISO 14001**

**ISO 9001**

# Customers that build on us



**THYSSENKRUPP**

**DELPHI**

**BOSCH**

**SCHAEFFLER**

**HARTING**

**DAIMLER**

**HELLA**

**PREH**

**MAKITA**

**CONTINENTAL**

**COMES**

**INTELIFORM**

**HAWEMA**

**IMATEX**

**VDL GROEP**

**ALPHR TECHNOLOGY**

**EMERSON**

# Contact



## **SMARTECH Fertigung GmbH**

Memellandstraße 2, 24537

Neumünster

Tel: +49 173 3221051

[www.smartech-fertigung.de](http://www.smartech-fertigung.de)

[office@smartech-fertigung.de](mailto:office@smartech-fertigung.de)

Hergestellt in **Rumänien**  
nach **deutschen Standards**